



# YOKOHAMA SOUTH TOUR

	Basic Tour	Special Tour
Overall Time:	1 day	1 day
Overall Accessibility:	★★★★☆	★★★
Overall Immersion:	★★★★☆	★★★
Overall Attractiveness:	★★★★☆	★

While this tour will lead you south towards Central and Southern Yokohama, it will not feel like leaving the city at all. In fact Yokohama and Tokyo have long grown together, forming a greater city complex called *Keihin*, which itself is part of the even larger *Tokaido* metropolis that spans from Chiba to Osaka-Kobe and houses more than half of Japan's population.

Consequently Yokohama feels very much like another sub center of Tokyo and can be reached fairly easy via JR railways in under 1 hour. On the other hand, Yokohama *is* special from Tokyo – for example unlike Tokyo it has a very distinctive city center set around a very distinctive skyline, made up not only by the famous *Landmark Tower*, but also one other very special landmark known and loved by PGSM fans (as seen on the right).

I have separated the tour into the **Basic Tour**, that takes about one day and will lead you to three places that are easy to get to, have a very nice PGSM feel to it and are also quite attractive for non-PGSM travel companions. The **special Tour** on the other hand will lead you to three more places that are quite nice for PGSM fanatics but otherwise make you loose too much of your precious time in order to get there – also for non-fans there is nearly nothing worthwhile about them.

If you're really fast and follow the instructions closely, you might even be able to cramp both tours into a single day, but it will mean that you will have almost no time left to settle down and actually enjoy fact that you've really made it there.



Every tour description starts with four values: time, accessibility, immersion and attractiveness. Here's what they are about:

## Time

The approximate amount of time for the tour, including the time to get back to the starting point.

## Accessibility

This rating shows how easy you can get to the location, both in means of time and effort.

- ★★★★☆ Practically lies by the way, with no trouble finding it whatsoever
- ★★★★☆ Needs a little detour, but still very easy to find without much time to get there
- ★★★ Closeby, but needs some effort and orientation skills to find
- ★★ A real challenge to find, even with this location guide at hand
- ★ Only recommended if you have a lot of time and at least basic language skills

## Immersion

This is a very subjective rating of mine, judging who deeply one feels drawn into the World of Sailor Moon by visiting that location.

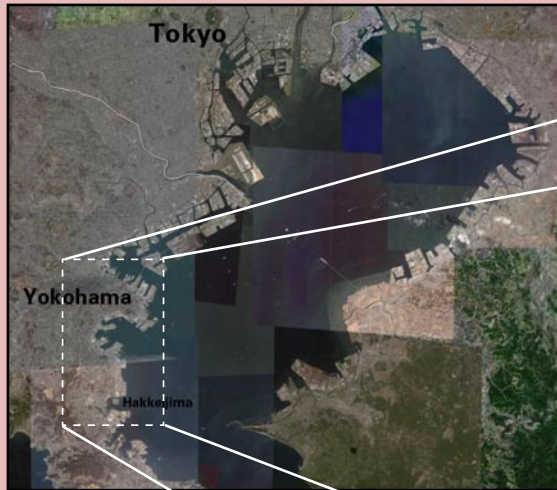
- ★★★★☆ Perfect immersion - a must for every diehard PGSM fan
- ★★★★☆ Feels very much like the real deal, with very little distractions
- ★★★ As long as you close your eyes and block out any distractions, you can still get a scent of PGSM
- ★★ Only recommended, if this location is part of your favourite scene
- ★ Going there is hardly worth it

## Attractiveness

Another important rating that tells you if the location holds attractions beyond PGSM that allow you to take your travel companions with you, even if they're not into PGSM

- ★★★★☆ Full fledged tourist spot - nobody will even notice why you're really there
- ★★★★☆ Very nice place to go for everyone, not just PGSM fans
- ★★★ Quite nice, but only if you're into this kind of location
- ★★ You will have to make up a very good story to lure your folks there
- ★ Better go there on your own





The satellite map on the left shows the six locations of the Yokohama South Tour. Strangely enough, the basic tour is made up by the Ferris Wheel, Great Hallway and Sea Paradise, while the special tour gets you to the Business Park, the Tree and the Seashell. However, what seems odd at first glance makes perfect sense, please trust me on this. For the easier, enjoyable basic tour you want to go to the first three places, while the other three are nice enough but all have their down-sides, which I will explain later.

First things first – the Ferris Wheel is not just very easy to find, but also a perfect tourist spot. It is located just outside Sakuragicho station in one of the most beautiful waterfront citycenters I have ever seen. The panorama shoots presented here cannot really capture the feeling, but you can go to this page for a truly awesome night panorama shot:

[http://www.panoramas.dk/fullscreen5/f23\\_yokohama.html](http://www.panoramas.dk/fullscreen5/f23_yokohama.html)

Well, the PGSM importance of the Ferris Wheel needs not be explained, ne? So just wander around and enjoy the tourist attractions: the Landmark Tower, the Maritime Museum, the Yokohama Cosmo World Amusement Park and many more. And of course don't miss to get onto that Ferris Wheel. It's awesome!



Panorama Shot 1: Right Place, but rainy



Panorama Shot 2: Sunny, but wrong place





# FERRIS WHEEL

Time:	about 1 hour
Accessibility:	☆☆☆☆☆
Immersion:	☆☆☆☆
Attractiveness:	☆☆☆☆☆



## Position

Latitude: 35°27'19.11"N  
Longitude: 139°38'12.19"E



The Landmark Tower, as seen from the Ferris Wheel



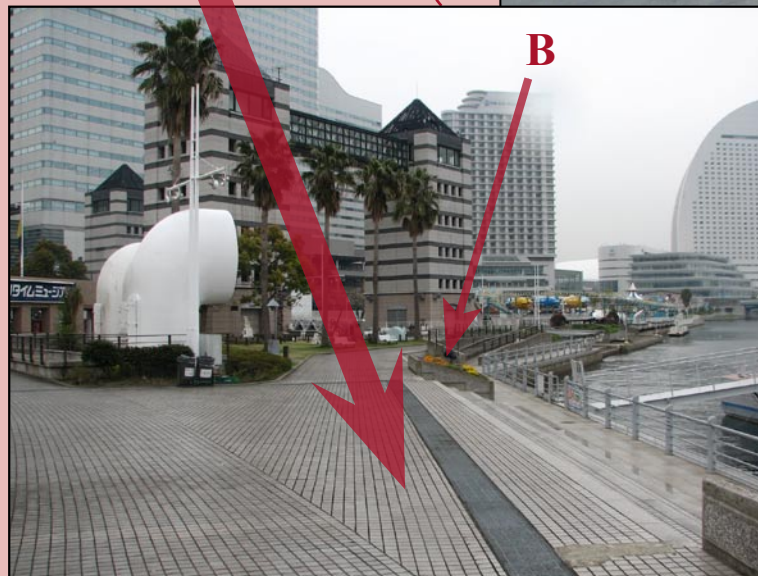




The Maritime Museum – you can leave your folks there, while you are looking for the exact locations. What locations...?



THESE locations! :-)



## Act 12

**A:** Usagi's waving scene and Minako's Sailor V running scene

**B:** Minako's waiting scene and Usagi's and Minako's talking scene (teleport from here directly to the Ferris Wheel and back \*g\*)





# THE GREAT HALLWAY

Time: 20 minutes  
 Accessibility: ★★★★★  
 Immersion: ★★★★★  
 Attractiveness: ★★

The Great Hallway of the Yokohama-Kanazawa HighTech-Center is the only publicly accessible PGSM inside shooting location that I've found so far, and being able to get inside is what makes it so special. This is not just a 5-Star-Immersion, it is a perfect **100%-Immersion**, throwing you right into the series. Pictures cannot describe it, you have to be there to believe it. This is probably the place where the most fighting scenes and also some of the most heartbreaking dourama scenes took place – an absolute must for every true PGSM fan.

Of course apart from PGSM there's little reason to go there, unless you book a room in the Techo-Tower Hotel – they charge around 10,000 ¥ per night. However it's just a 100 m walk from the Sangyo Shinko Center station, which in turn is one of the stations on your way down the Kanazawa Seaside Line to Hakkeijima, so it's really just a tiny detour. Of course it means that you will have to buy another ticket to get back onto the train, but that's more than worth it.



Sangyo Shinko Center station

## Position

Latitude: 35°21'14.86"N  
 Longitude: 139°38'41.40"E





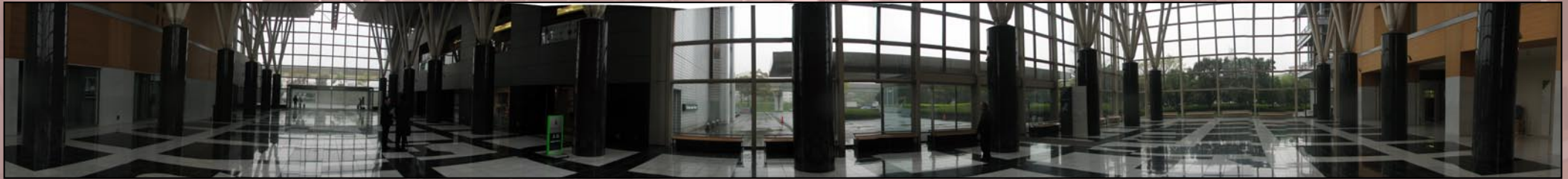
Get off from the JR Line at Shinsugita station and look for the Kanazawa Seaside Line. After a short walk and some confusion (just ask the people, they will tell you where to go), you will follow some stairs upwards and have to buy a new set of tickets, because this is a non-JR private line. Buy tickets to Sangyo Shinko Center station, if you want to see the Great Hallway first, or buy tickets for Hakkeijima station, if you want to see the Sea Paradise first. Soon you should see this:



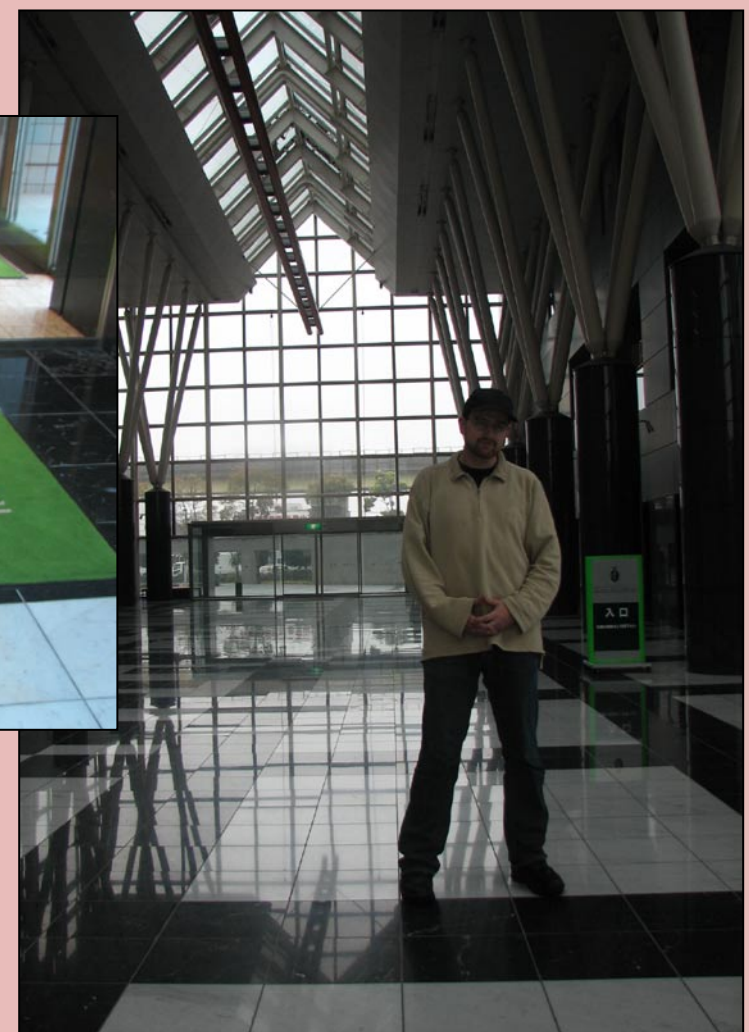
If you want to get off at Sangyo Shinko Center station, know would be a good time to head for the doors.











„A hundred bucks for a hotel room? That's tough ... how 'bout if you let me sleep here in the hallway?“





Hakkeijima Sea Paradise coming up!



You can get there by train ...  
(yes, nobody is steering this thing!)



... or take the bus. (just kidding)



Engraving on the bridge



# HAKKEIJIMA SEA PARADISE

Time: at least 2 hours up to 1 day  
Accessibility: ☆☆☆  
Immersion: ☆☆☆☆  
Attractiveness: ☆☆☆☆☆

Wellcome to Sailor Moon World, AKA Hakkeijima Sea Paradise! This amusement park is a great place for everyone with an interest in park rides and aquariums. The Aqua Museum where you can walk in a tunnel trough a gigantic aquarium has a great underwater feeling to it, and the rollercoaster is the most exciting one I've ever been on, because it takes you onto a really long ride with all specials imaginable. But the main attraction for all PGSM fans is of course the Merry-go-round with an incredible immersion value. Because you walk past it when entering the park, the feeling of stepping right into Sailor Moon World will never leave you.

The downside is that you don't see many people in that park. Sure, you don't want it to be crowded, but on a weekday it feels really empty, so try to go there on a sunny weekend day for maximum enjoyment.

## Position (Ami's Merry-go-round)

Latitude: 35°20'15.60"N  
Longitude: 139°38'34.93"E











The „Surf Coaster“. If you are planing to desert to the Dark Kingdom, take your friends there first!



No queues, no lines, no waiting times.



If you ever wanted to know what it  
feels like to be scared to death,  
try this thing!



Looks familiar? You bet!



Another pleasant ride. The kanji for „High“, „Electricity“ and „Pressure“  
promise a once-in-a-lifetime experience!





Dolphin Fantasy



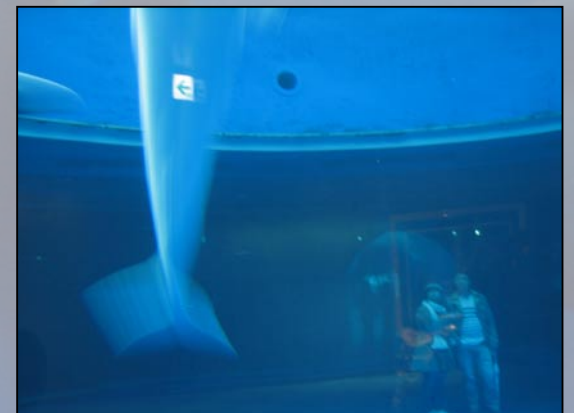
Stop moving around so fast, dammit ...!

Do you recognize him?



Right! It's that underwater guy from Act 22!

And there he's gone again ...







Quite crowded down here ...



One nice fella.



One not so nice.



One for the Turtle Count!



„Oi, whatcha lookin' at?“



„Don't run away, we're your friends.“





The 1-Day-Ticket. I am still wearing it ...



„See you again“? Oh, wait, that's probably just a coincidence ...  
Well, honestly, given a chance they will certainly see me again – and more than once.